

Smart Health City with Blue and Green Space

Yun-Chul Hong, MD, PhD
Seoul National University





To build attractive communities, developers talk up their use of technology to create a clean, green place that's free of aggravations like pollution, traffic and — in some cases — even bad weather. But there's a fine line between hope and hubris, and many smart city projects have found themselves on the wrong side of it.

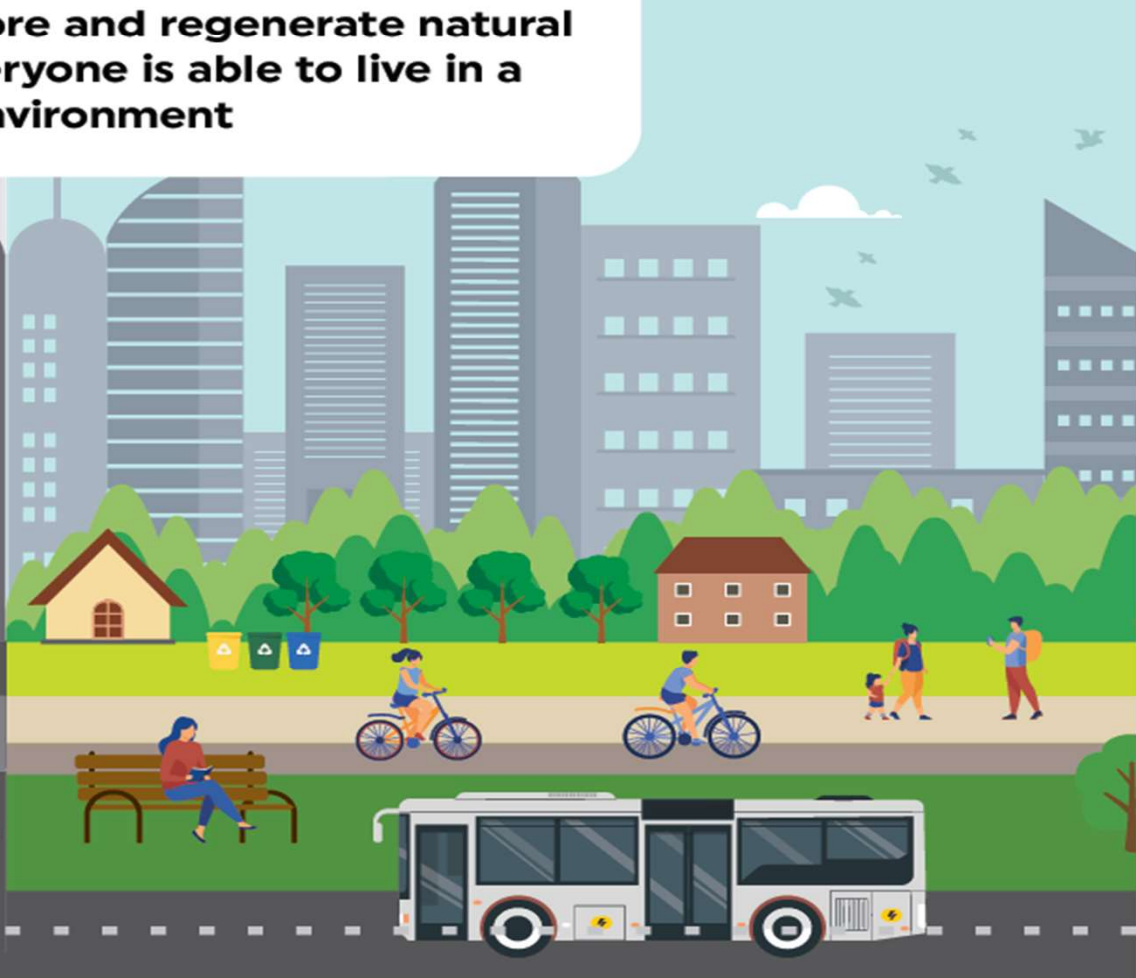


WHERE WE ARE NOW

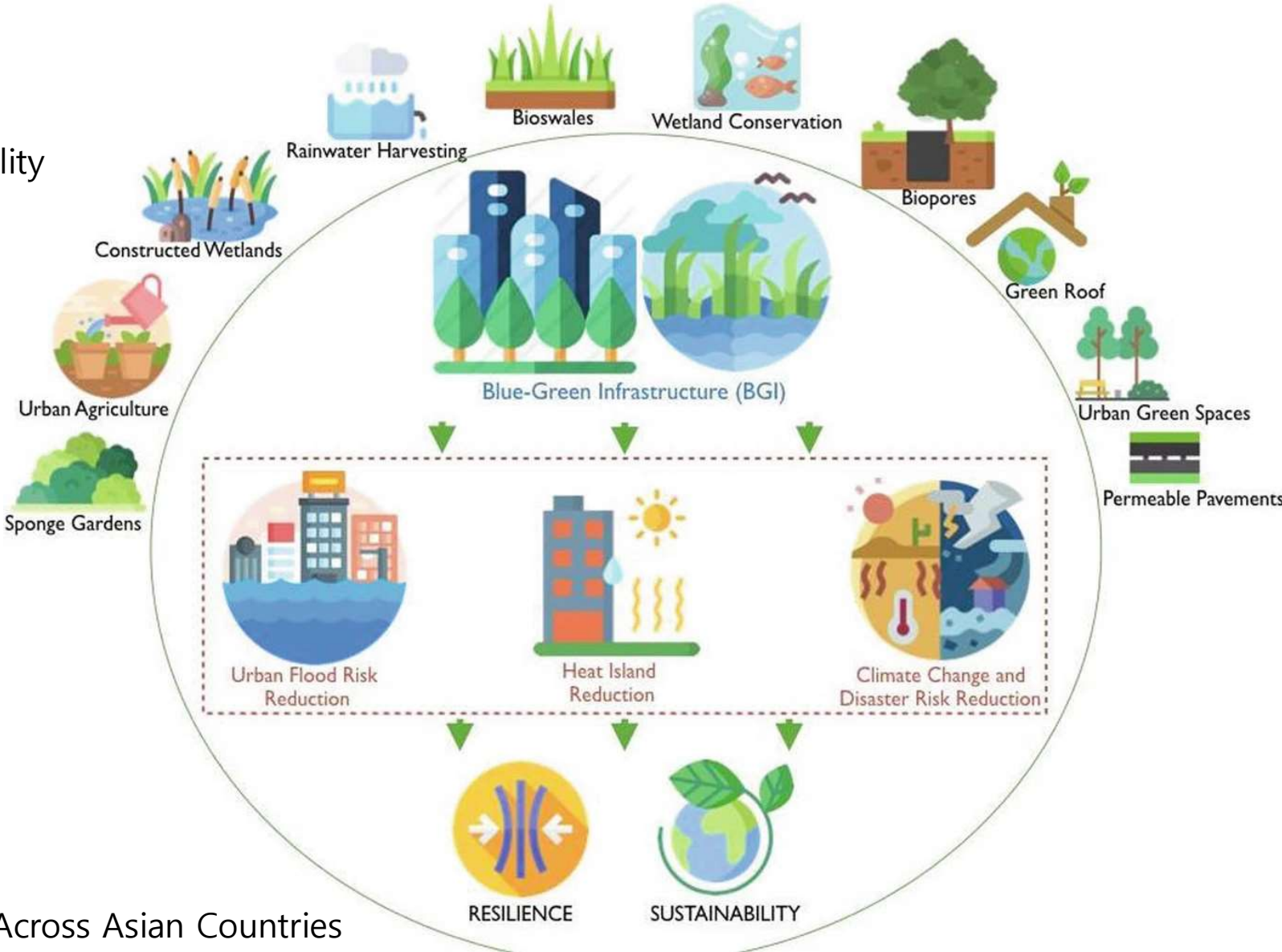
WHERE WE NEED TO BE

ACTION NEEDED

We need to protect, restore and regenerate natural biodiversity so that everyone is able to live in a healthy environment



Blue-Green Infrastructure for Addressing Urban Resilience and Sustainability in the Warming World



Blue-Green Infrastructure Across Asian Countries

Health Benefits of Green/Blue space

- microclimate regulation
- Improved Air quality
- Improved physical activity
- Psychological benefits
- Provide social interaction



Health Benefits of Blue Space

Blue Spaces refer to water bodies such as rivers, lakes, ponds, and even artificial water features like fountains.



- Relaxation and Stress Reduction: Being near water has been shown to reduce stress levels and promote relaxation.
- Physical Activity: Water bodies encourage physical activities like swimming, kayaking, or jogging along the waterfront, which promote fitness and cardiovascular health.
- Improved Air Quality: Water features can help improve air quality by acting as natural air purifiers.

Health Benefits of Green Space

Green Spaces include parks, gardens, urban forests, and green rooftops.



- Physical and Mental Health: Access to green spaces encourages outdoor activities, reducing the risk of chronic diseases like obesity and promoting mental well-being.
- Climate Regulation: Trees and vegetation help mitigate urban heat islands and improve air quality by absorbing pollutants and producing oxygen.
- Community Engagement: Parks and gardens serve as gathering spaces, fostering social interactions and community cohesion.

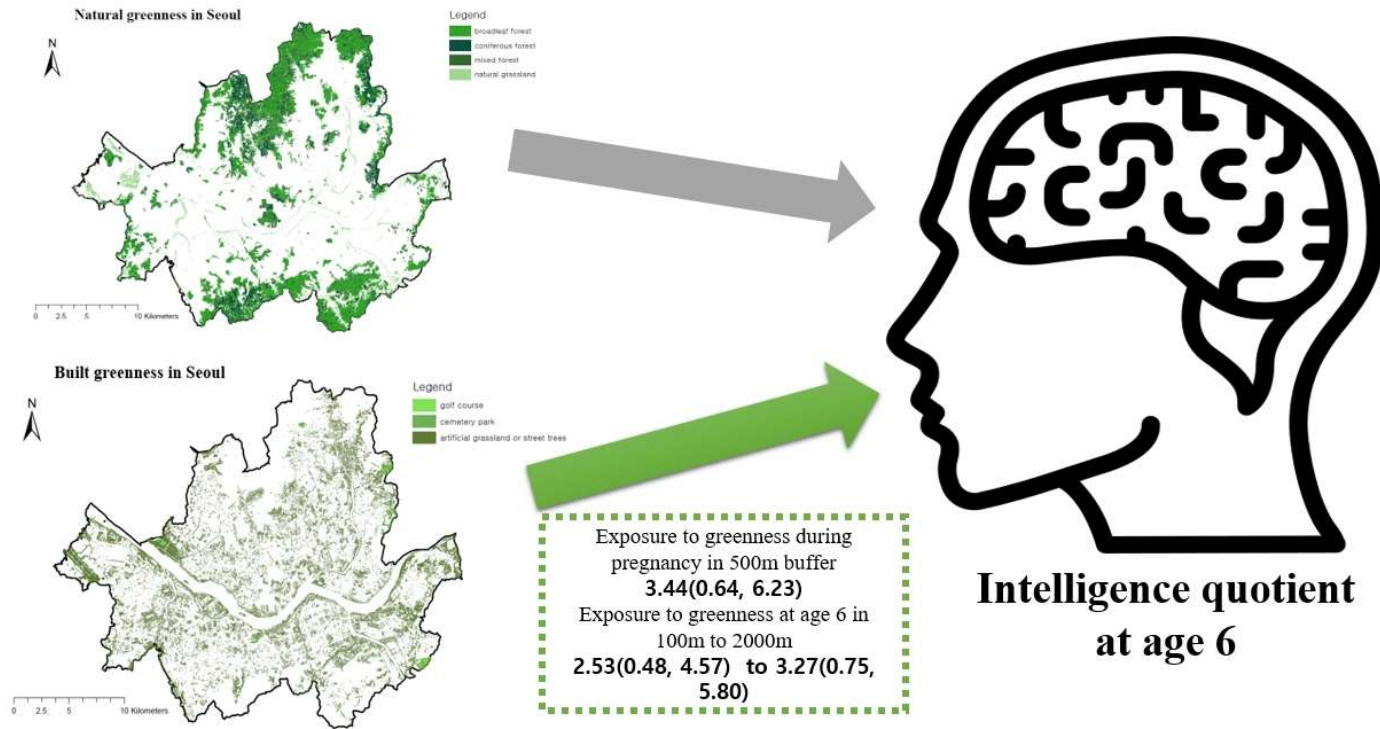
Parks, urban forests, tree-lined streets and riverbanks support urban well-being by providing space for rest, relaxation and exercise.



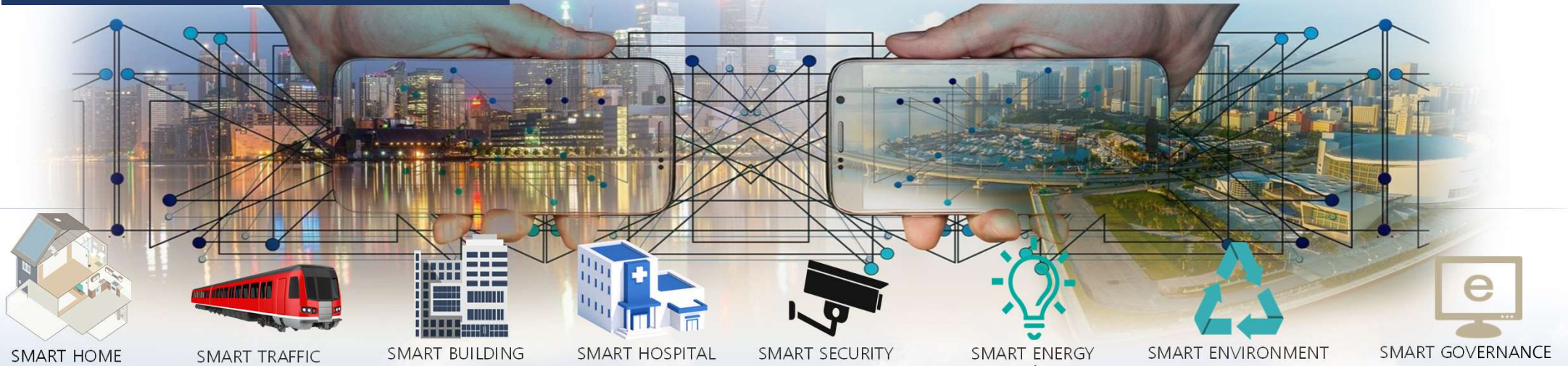
Green space reduce atopic dermatitis



Greenness affects IQ



Current Idea of Smart City



Focus on

Today, Smart City has been focused on high technology.
We must add the concept of sustainability and health.

Human Centered Smart Health City



SMART HOME



SMART TRAFFIC



SMART BUILDING



SMART HOSPITAL



SMART SECURITY



SMART ENERGY



SMART ENVIRONMENT



SMART GOVERNANCE



For Children

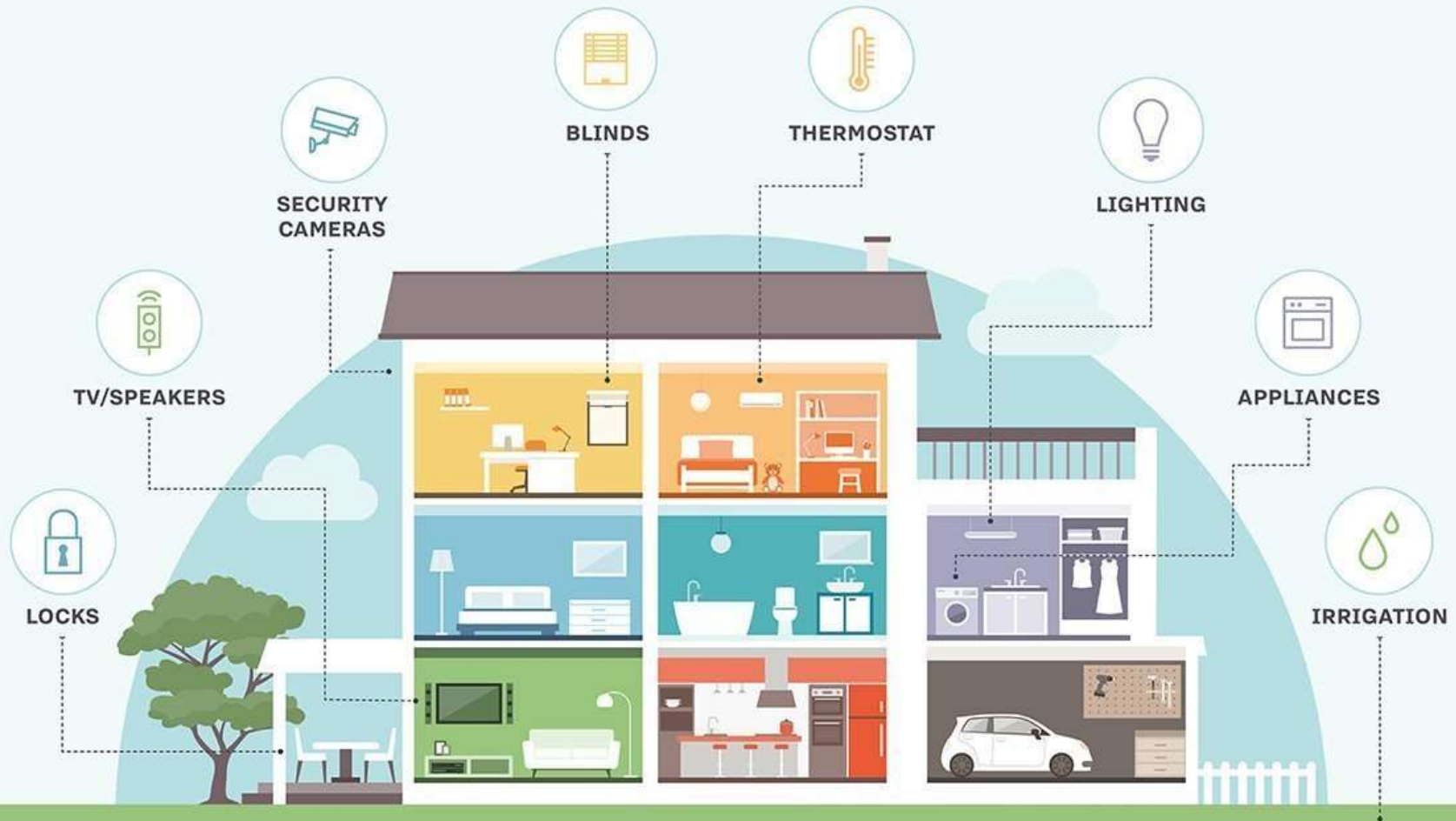


For Happy Life



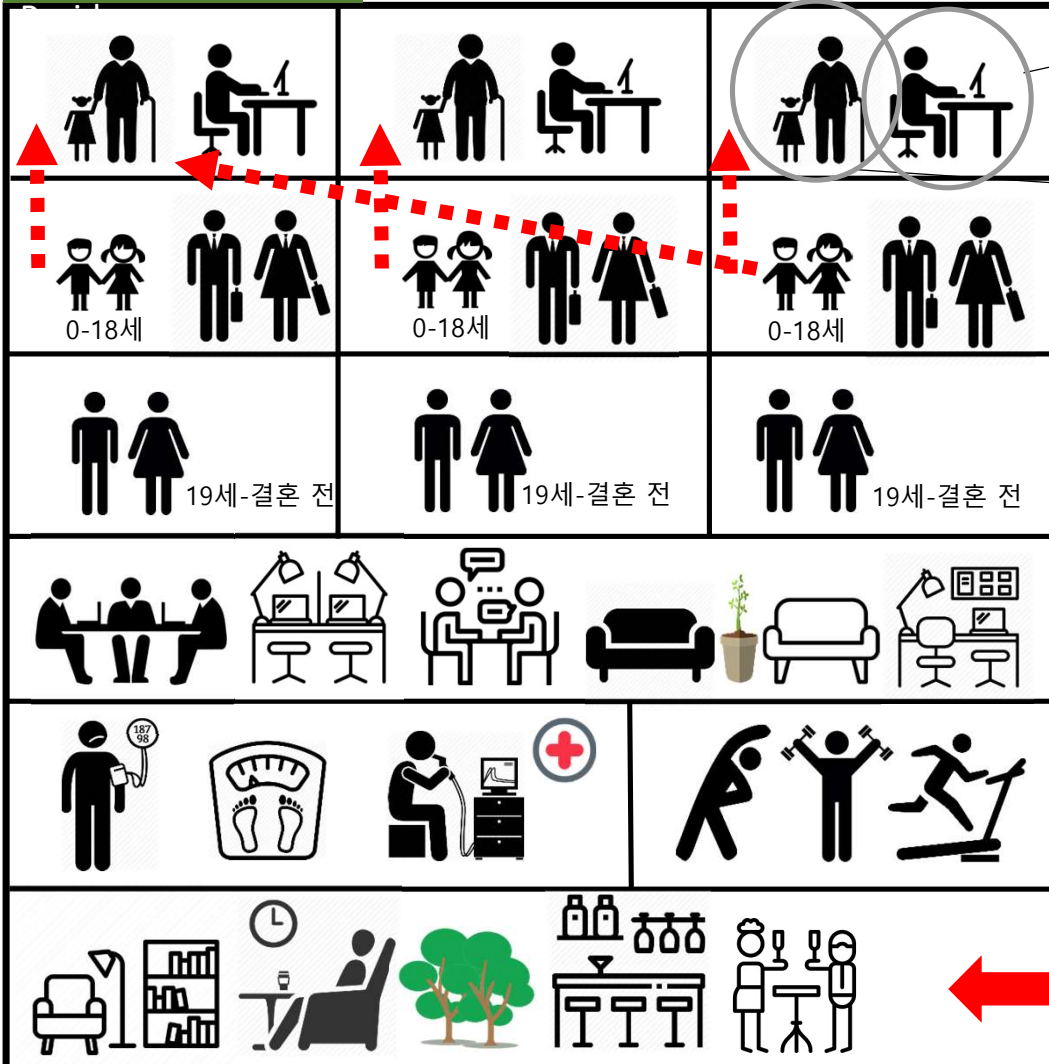
For Elderly

HOME SMART HOME



Future community health

Community



- Continuous production until 75 years of age with flexible work.
- 3-4 hours of work a day and child care, depending on individual competency

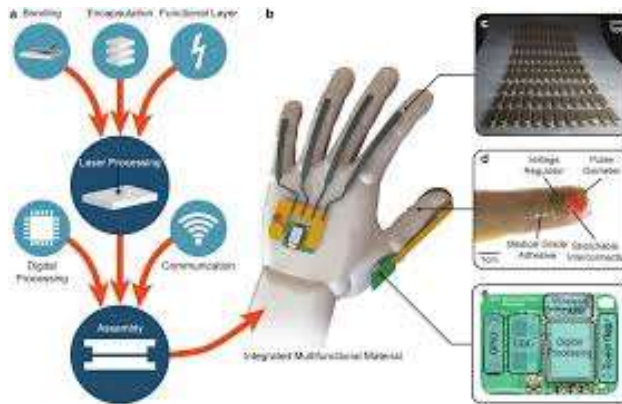
- Child Care: A system in which grandparents take care of grandchildren
- Caring for a child aged 0-18 on behalf of his or her parents

Community Care



10-minute walk

Health monitoring



Home medical devices

By installing environmental sensors inside the house, the health status of residents is constantly monitored and collected



Smart home sensor

Sleep pattern monitoring



❖ Collect

- Object and Peripheral Environment Data Collection

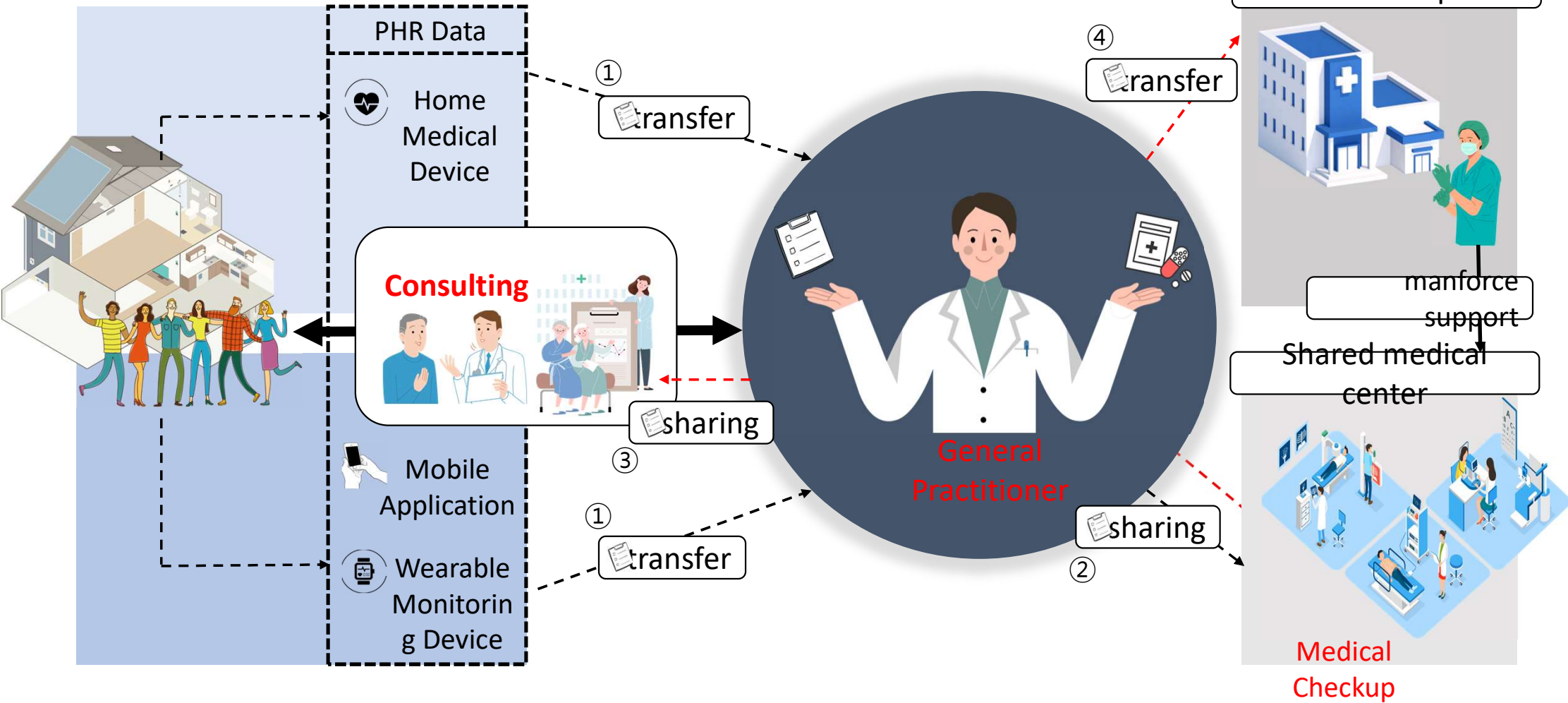
❖ Practical use

- The health status is analyzed with AI through the image of the face, temperature, and muscle movement through the body reflected in the mirror.
- Accumulate daily data through the platform and use it as a personalized diagnostic device.



Community Primary Health Care Service Model

----- General practitioner role
----- Data transfer



Primary Healthcare Platform in Smart City

Smart Lifecare Platform

50,000명을 위한 도시생태계
보행 생활권의 Smart lifecare platform이
도시 공동생활의 중심



Big Data Storage & Process System



Healthcare Platform



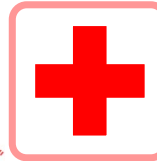
기능적 강화

Primary Healthcare Monitoring Platform

지속성을 갖는 일차의료
Smart Home + Digital
healthcare device 의료정보로
미래의료 서비스 제공



Primary Healthcare (Accountable Care Doctor)



Secondary hospital

의료전달체계상 이차의료기관들
인력, 시설, 병상, 응급의료체계
의원-병원 간 데이터 상호 전달 체계

역량적 강화



Shared Community Hospital

Smart City 내 의사가 이용할 수 있는 설비, 인력 등을
제공하여 일차의료 역량 극대화
개방형 병실, 호흡기 시설, 의료기기 (MRI, CT)



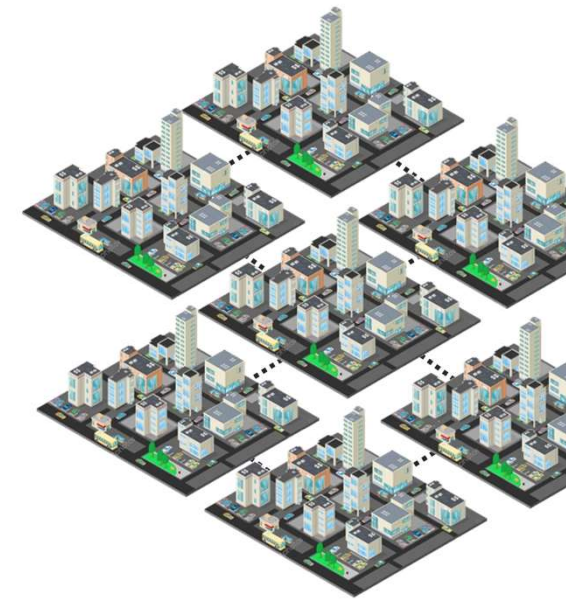
Public Health Center

보건소 등 행정 조직
복지 서비스 제공 조직
데이터 모니터링 연계 및 관리 역할

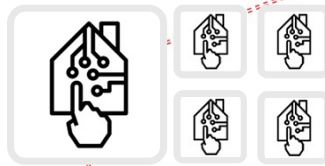
Smart City

의료 시스템은 200,000명 규모 인구를 단위로

⇒ Smart Lifecare Platform



나에게 반응하는 집
Lifelog, 생체정보, 임상검사 결과를 생활
속에서 데이터로 생성
정보를 동의 하 의료진에 제공

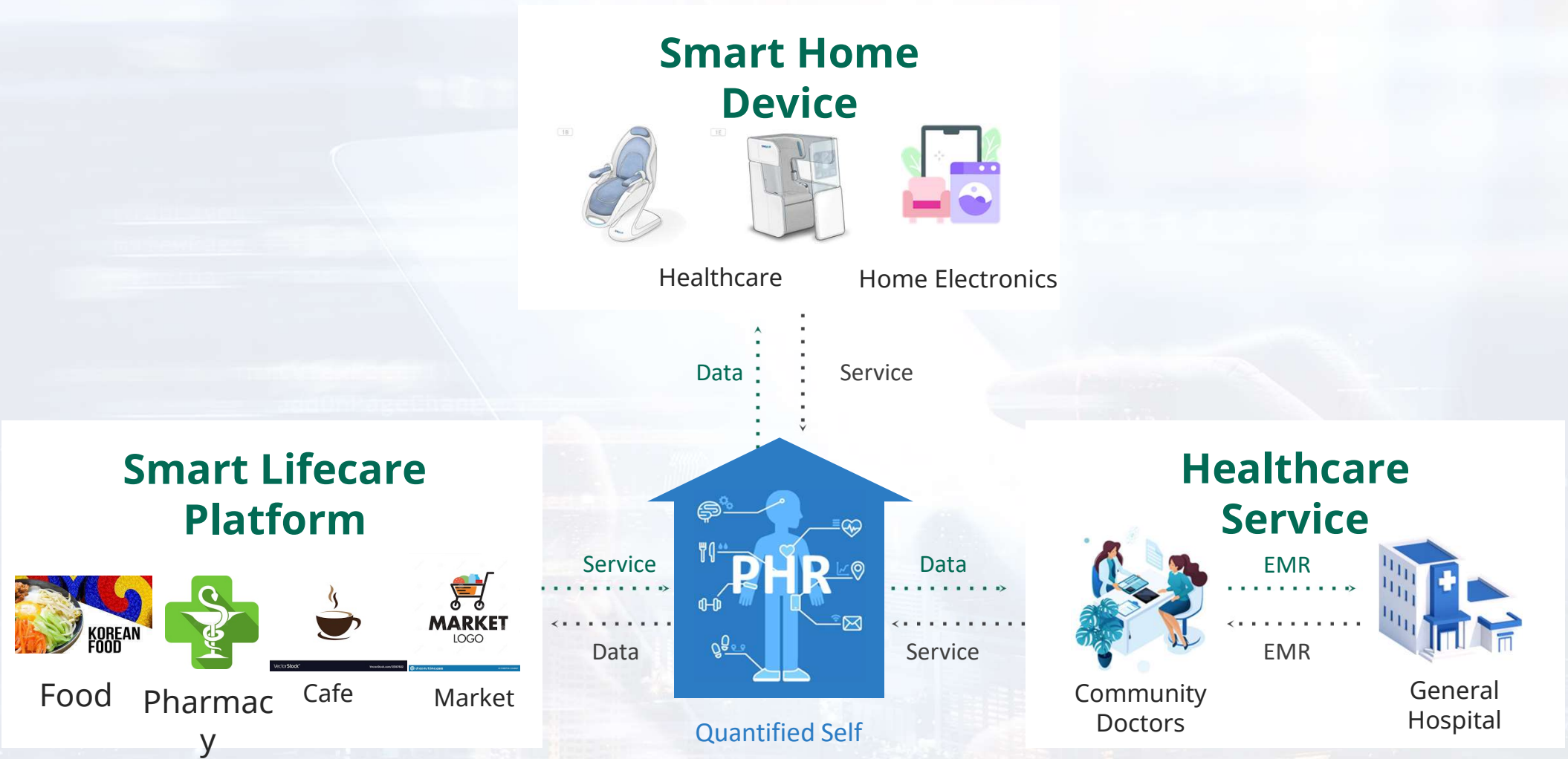


Smart Home

Digital healthcare device
Wearable Monitoring Health Device



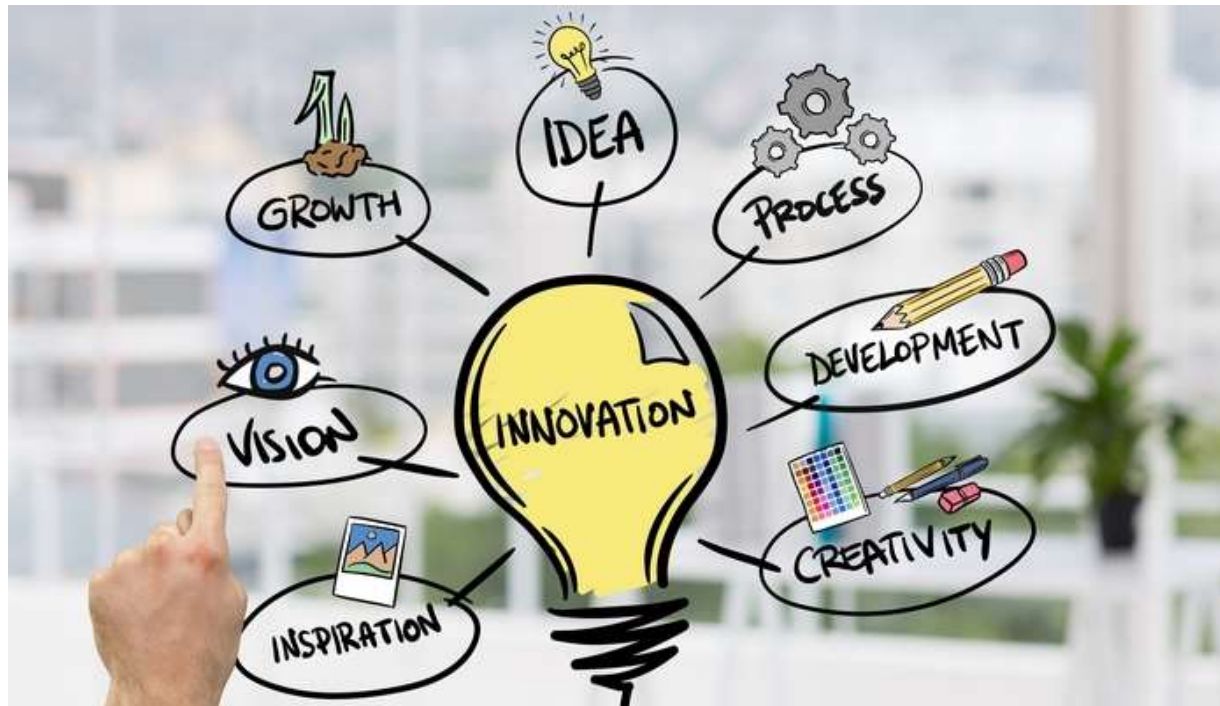
Human



Living lab for smart health city



Living Labs: Science, Society, and Co-creation



Future Society





Thank You!